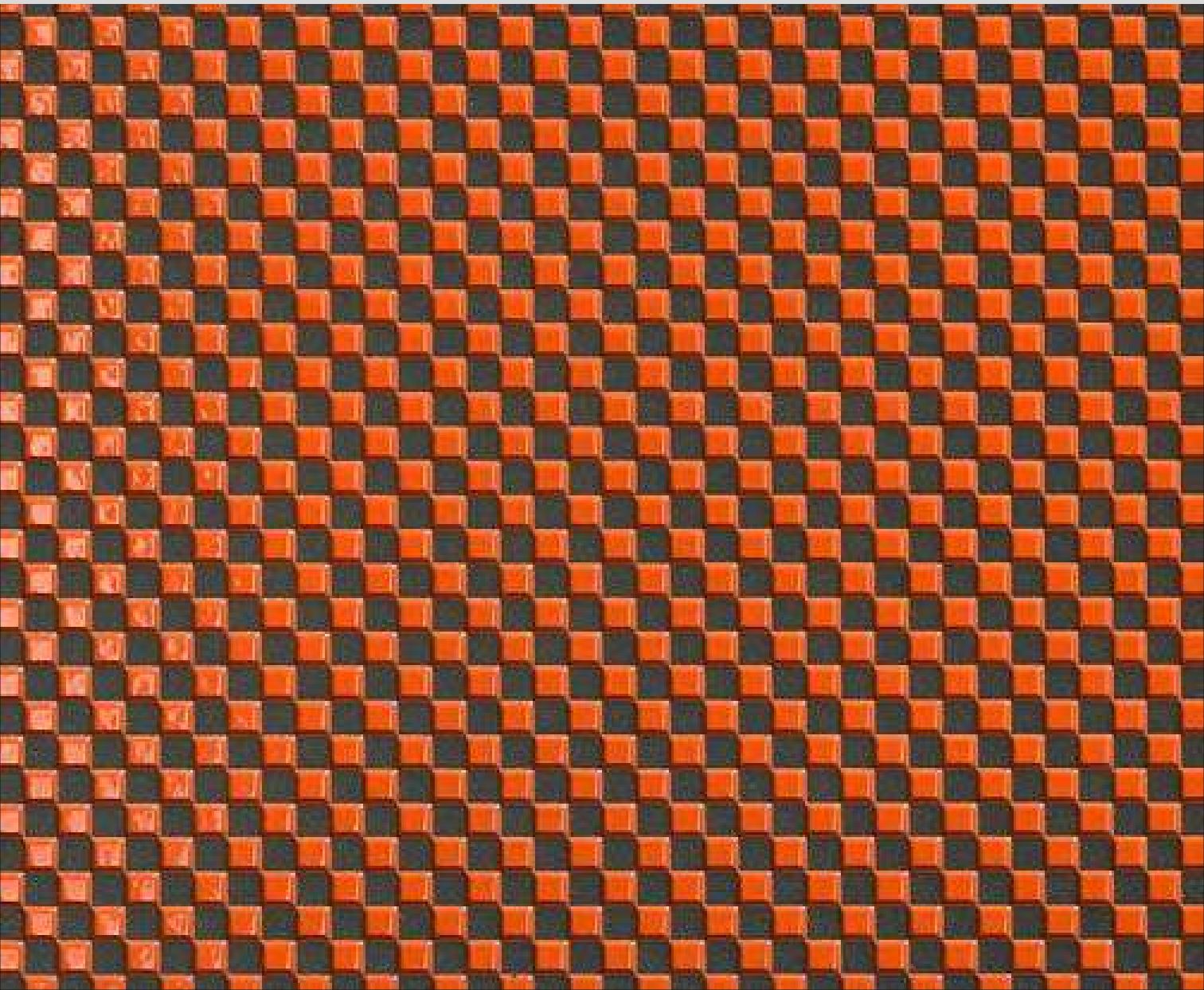


ELEMENT



AN ISO 9001 : 2015 CERTIFIED COMPANY

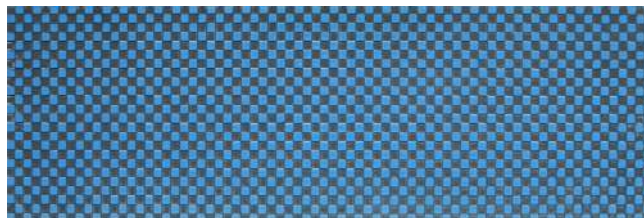


# F1 ELEMENT



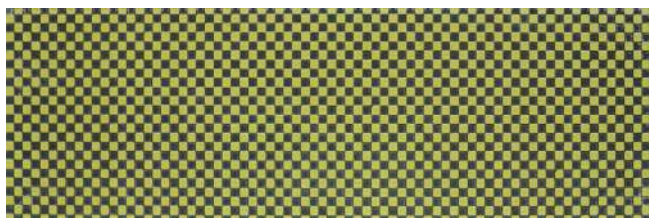
P-2000

ELEMNT ARANCIO  
600mmx200mm



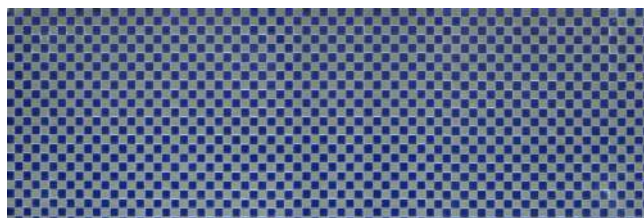
P-2000

ELEMNT BLU  
600mmx200mm



P-2000

ELEMNT LIME  
600mmx200mm



P-2000

ELEMNT PERSIAN  
600mmx200mm



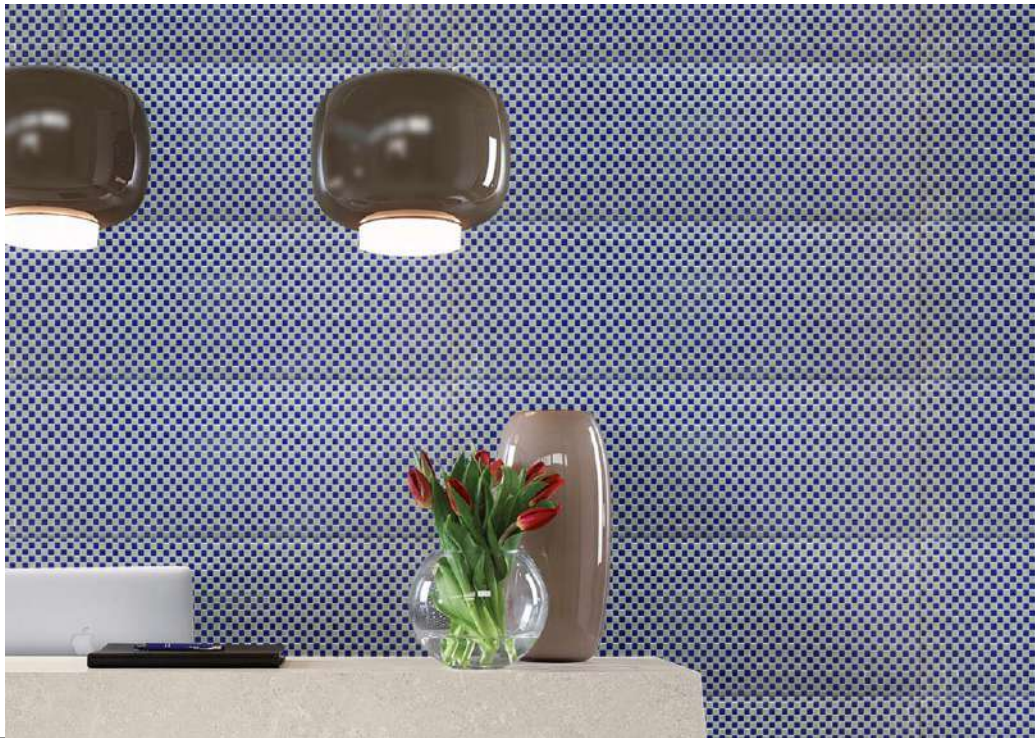
P-2000

ELEMNT ROSA  
600mmx200mm



P-2000

ELEMNT PLATINUM  
600mmx200mm





# DAMASCUS



P-1456

DAMASCUS AZURE  
600mmx300mm



P-1456

DAMASCUS CARBON  
600mmx300mm



P-1456

DAMASCUS SAVANE  
600mmx300mm



P-1456

DAMASCUS EMERALD  
600mmx300mm



P-1456

DAMASCUS RED  
600mmx300mm

<b>Packaging Details</b>		
<b>Size in mm</b>	<b>No. of pcs./Box</b>	<b>Area coverage in Sqm./Box</b>
600 x 200	6	0.72
600 x 300	6	1.08

\* All sizes in mm

Note: Colours shown are as accurate as the limitations of the printing process will allow. Prospective customers are advised to inspect a sample of the tile before ordering. Every effort has been made to ensure the accuracy of the information given. However, the company reserves the right to change the specifications without prior notice. Sometimes variations in shade or size being inherent to ceramic industry may occur. Before fixing, we advise you to follow the fixing instructions on the cartons of the tiles as no responsibility can be accepted by the company once the tiles have been fixed.



**GRAFFITI (INDIA) PVT. LTD.**

Corporate Office : Graffiti House, Block No. 20, Magnet Corporate Park,  
100 ft. Hebatpur-Thaltej Road, Off S.G.Highway, Thaltej,  
Ahmedabad-380 054, INDIA.  
Ph. : + 91 79 29709611/2/3/4, + 91 79 26406811/12/13  
email : info@graffititiles.com  
website : www.graffititiles.com, Instagram: graffiti\_tiles